



## BLUEPRINT 2011 MISSISSIPPI

MISSISSIPPI ECONOMIC COUNCIL  
MOMENTUM MISSISSIPPI  
MS PARTNERSHIP FOR ECONOMIC DEVELOPMENT



# BLUEPRINT 2011

---

*Haley Fisackerly*  
*presented to:*

Mississippi Economic Development Council  
Summer Conference  
Thursday, July 14

# TODAY'S OBJECTIVES

---

- Overview of Blueprint
  - 2004 Key Successes
  - Blue Print 2011 Focus Areas and Cross Cutting Issues
- Details on Economic Competitiveness Committee and Key Topic's
- Recommendation Surrounding Health Care

# BLUEPRINT 2004 FOCUS AREAS

---



**Educational  
Achievement**



**Economic  
Development**



**Business  
Climate & Image**

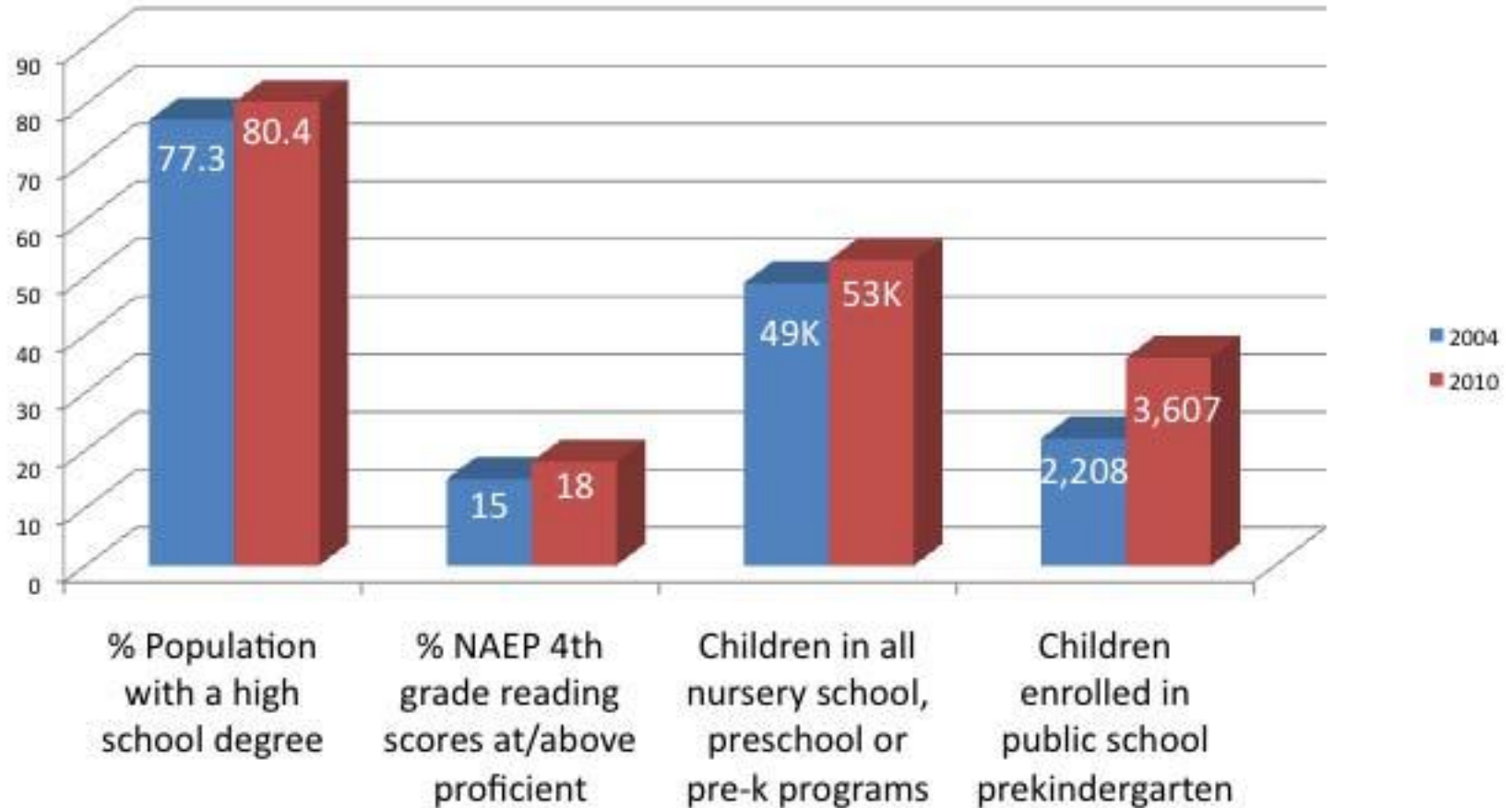
# BENCHMARKS SINCE BLUEPRINT 2004

---

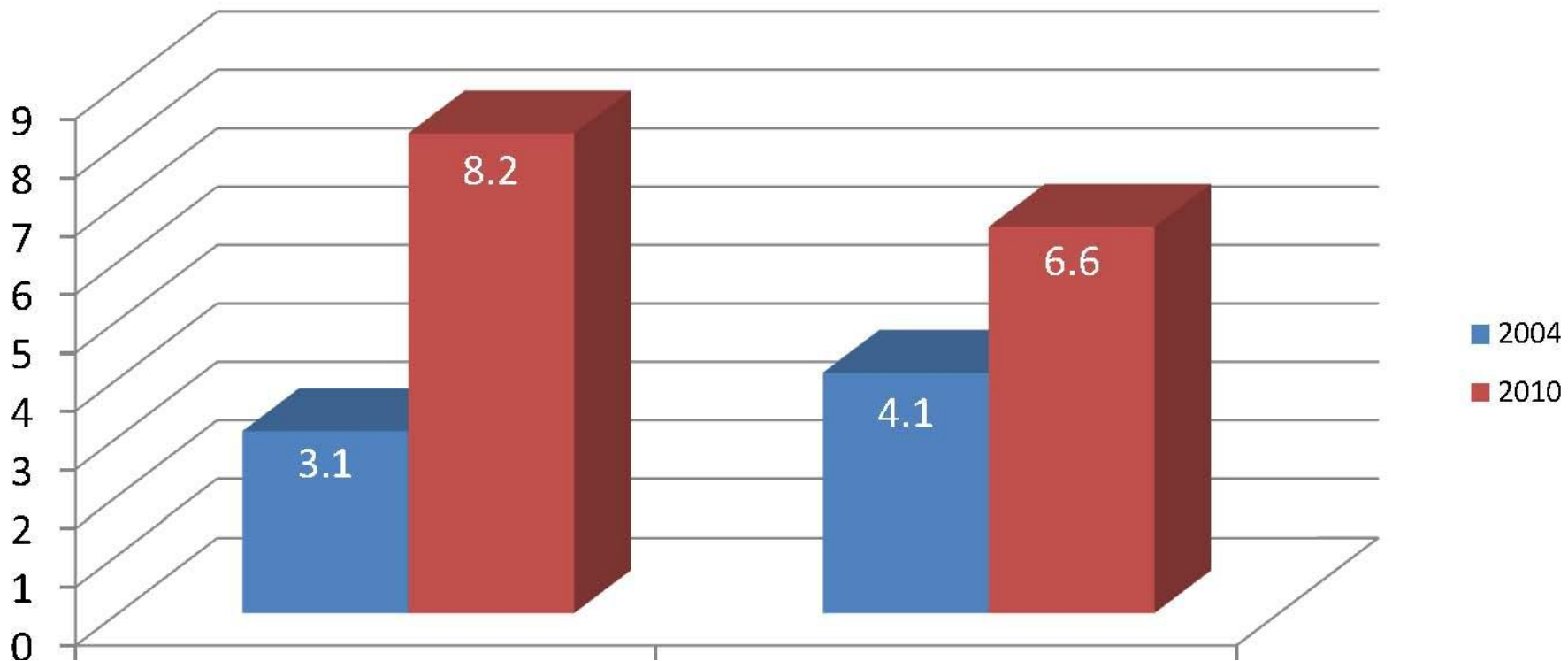
- 7 out of 10 goals have defined accomplishments
- Tort Reform Act of 2004 (effective 9/1/04)
- Independent image surveys helped MDA craft marketing plans to target approaches
- State Port of Gulfport expansion plan developed to put MS in position to benefit from expansion of Panama Canal



# KEY BENCHMARKS SINCE BLUEPRINT 2004 EDUCATION ACHIEVEMENT



# KEY BENCHMARKS SINCE BLUEPRINT 2004 ECONOMIC DEVELOPMENT



Mississippi ranking improves from 11<sup>th</sup> to 7<sup>th</sup> among southeastern states

# BLUEPRINT 2011 FOCUS AREAS



# BLUEPRINT 2011 FOCUS AREAS



# POINTS OF INTEREST – HEALTH CARE

---

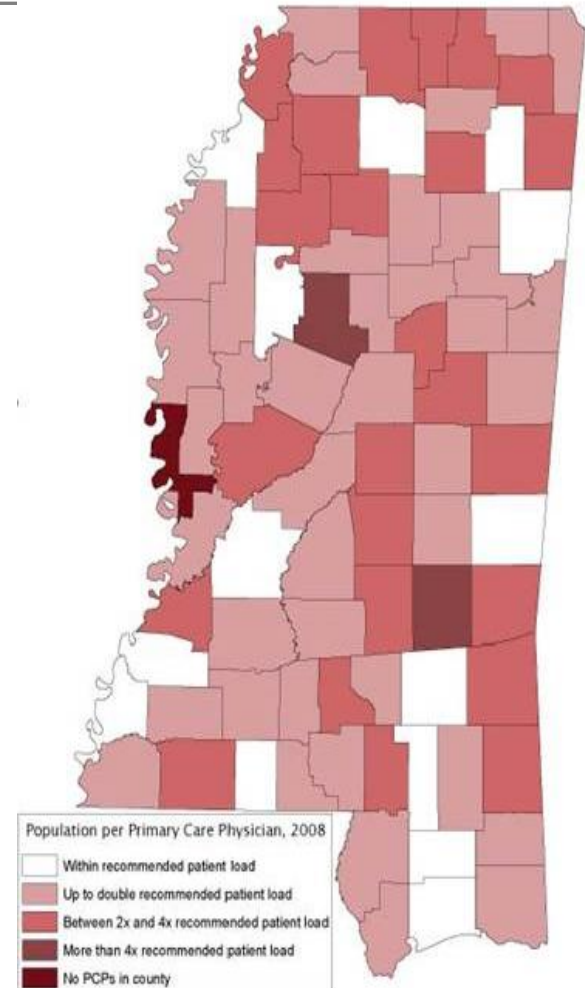
- As one of the largest industries in 2008, healthcare provided 14.3 million jobs for wage and salary workers.
- Ten of the twenty fastest growing occupations are healthcare related.
- Healthcare will generate 3.2 million new wage and salary jobs between 2008 and 2018, more than any other industry, largely in response to rapid growth in elderly population.
- Most workers have jobs that require less than 4 years of college education, but health diagnosing and treatment practitioners are highly educated.
- UMMC Economic Impact Study.

Source: US Department of Labor, Bureau of Labor Statistics

# HEALTH CARE RESEARCH

---

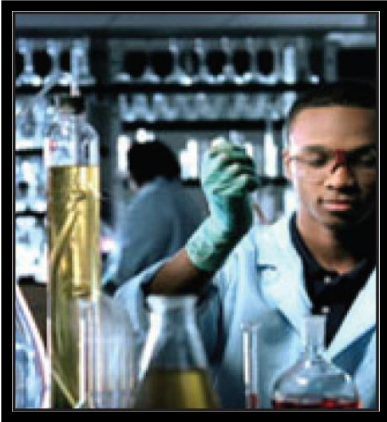
- Mississippi is 48th in doctors per population
  - *National avg. -271 physicians per 100,000*
  - *Mississippi avg. – 178 physicians per 100,000*
- By adding one physician, a county gains:
  - 21 new jobs
  - \$2 million in revenue annually
- 60 % of state's physicians practice in urban areas
- Mississippi is the 4<sup>th</sup> most rural U.S. state
- In 2008, of 300k patients at 21 community health centers, 55 % are a or below federal poverty level
- Mississippi is in Top 5 in deaths due to heart disease



# COMPREHENSIVE ASSESSMENT OF HEALTH CARE

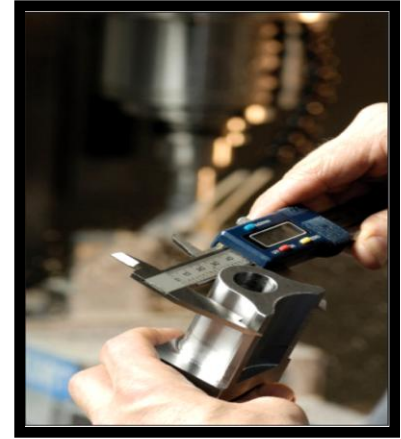
---

- BLUEPRINT 2011 under the Economic Competitiveness Committee is recommending that a comprehensive statewide assessment of Health Care be performed to identify key strategies that can be employed to promote economic development and growth of the industry. Four key areas that will be considered include:
  - ✓ **Work Force Development** – increase the number of health care professionals
  - ✓ **Attract New Investment and Jobs** – increase research and development, technology and entrepreneurship
  - ✓ **Retain Existing Business** – address sustainability of regional hospitals and clinics
  - ✓ **Improve Quality of Life** – improve availability of local health care, especially in rural areas



# BLUEPRINT 2011 MISSISSIPPI

MISSISSIPPI ECONOMIC COUNCIL  
MOMENTUM MISSISSIPPI  
MS PARTNERSHIP FOR ECONOMIC DEVELOPMENT



## QUESTIONS ?

---